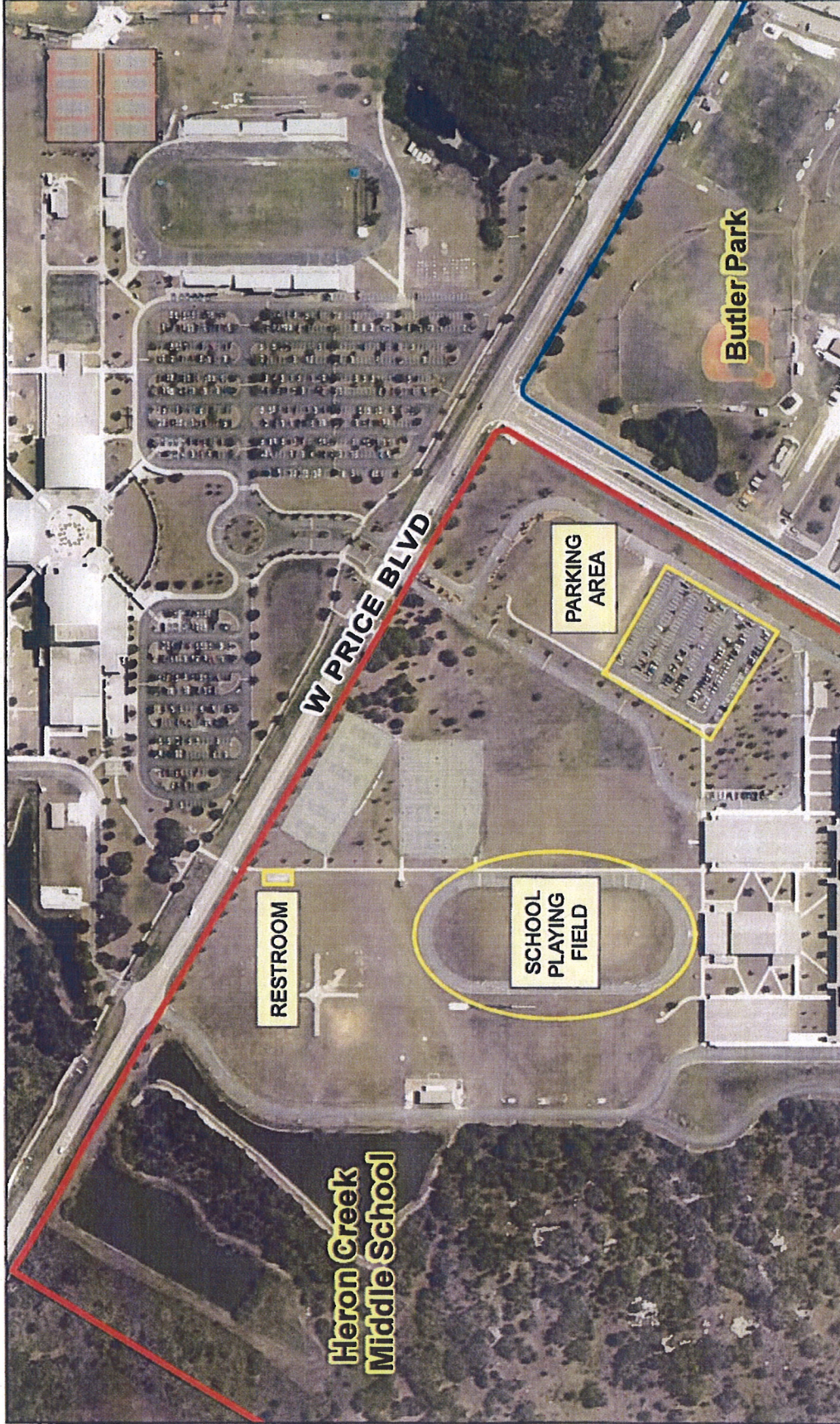


Exhibit A



Sarasota County
 August 1st 1997 - 2008 - 11

Aerial Imagery Provided by: Aerial Cartographers of America, Inc.
 Sarasota County, FL
 11/2008
 M.A.D. 1983 11/2008 (Base Plans Florida - West 1978 0002 to 8 - Survey 1 and 2)

This map is produced by the Sarasota County GIS. It is an informational system only. It is not intended to be used for legal purposes. The map should not be used for navigation. Copyright © ESCS 2012.

Path: N:\GIS\work\imgproc\imgproc\server\Project\GIS\Map\HeronCreekMiddleSchool.mxd

HERON CREEK MIDDLE SCHOOL

JUNE 2012

LEGEND

- HERON CREEK MIDDLE SCHOOL
- BUTLER PARK



Map published using ArcGIS 10.0 by contents on Wednesday, June 27, 2012